

Installation notes for NCspeed Version 6.3

May 2011

Content

- Introduction..... 2
- Installation requirements..... 2
- Installation..... 2
 - Start the installation..... 2
 - Optional settings 3
 - Licensing type 3
 - Program data folder 4
 - Create desktop icons 5
 - Setup CAM interface 5
 - During the setup process 5
 - License server installation 9
 - Hardlock license server installation..... 10
 - HASP-HL license server installation..... 10
 - Setup WorkNC interface..... 10
 - Setup Visi interface..... 11

Copyright
FORMTEC GmbH
Hiesfelder Str. 26
46244 Bottrop

Introduction

This document describes the installation requirements and the installation process for NCspeed version 6.3. FORMTEC is releasing new versions with new functions continuously via the [web page](#). Thus, the user can access the new functions as prompt as possible. All NCspeed users having a maintenance contract are eligible to download the actual version from our web page and can participate from our development.

If you have trouble using NCspeed and you try to re-install the application for fixing problems, we recommend to use the NCspeed maintenance utility (NCSMaint.exe) instead. It gives you a more detailed access to the installation components.

Installation requirements

The following operating systems are supported

- Windows XP, Service Pack 3 or higher
- Windows Vista, Service Pack 1 or higher
- Windows 7

NCspeed is a 32 bit application and runs proper under a 64 bit operating system.

It is important to have the Windows Installer Version 3.1 installed on the computer. Please check the installed software.

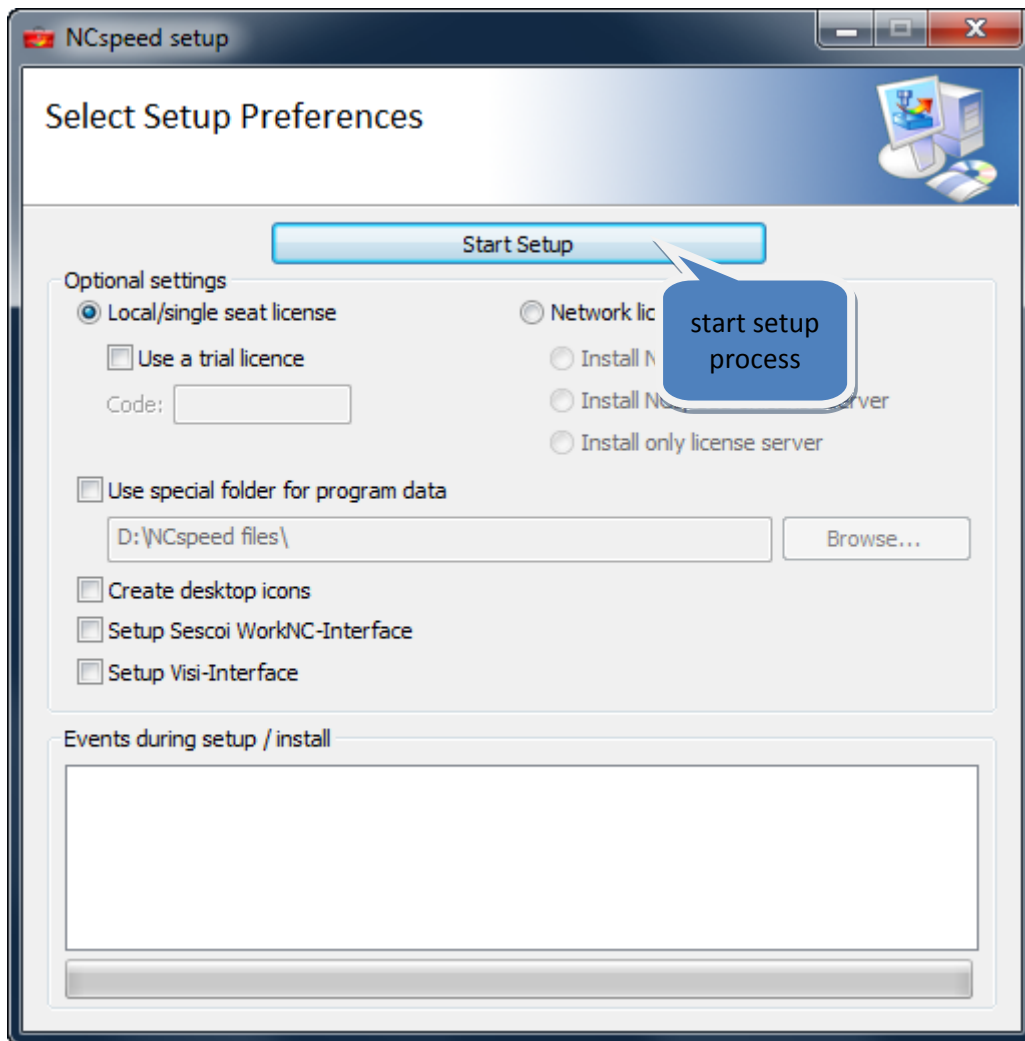
Installation

This section describes the installation of NCspeed from the supplied CD or download. If you have ordered a **network license** and you only want to install the network license server to manage the various NCspeed licenses on a **separate computer** (server) you should follow the direction given in section **Network license** on page 4.

For installing NCspeed administrator or similar privileges are necessary, because the drives for the software protection have to be installed. The setup routing will check this and, if necessary, ask for administrator privileges.

Start the installation

After starting setup.exe from the CD or download, the following dialog appears:



On this welcome dialog you have to click on “Start Setup” to start the installation.

Optional settings

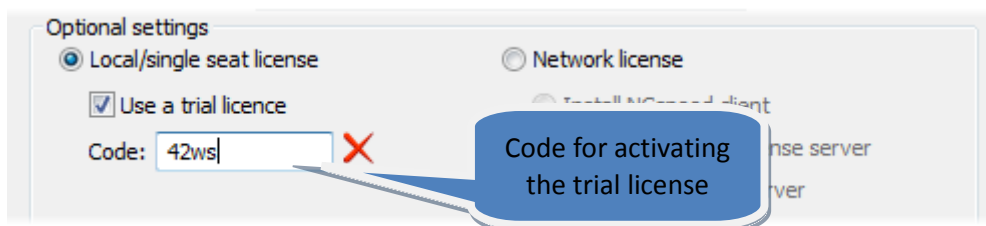
Licensing type

Depending on the license type you purchased you have to choose either local/single seat license, or network license.

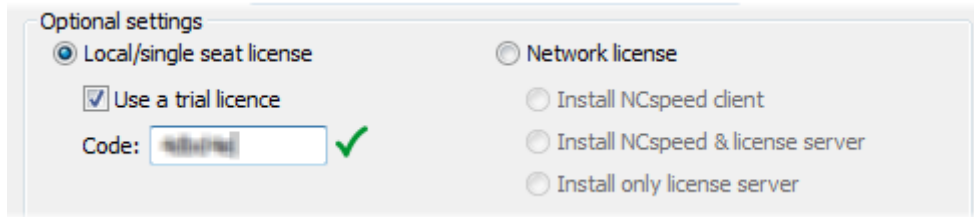
Local/single seat license

Select this option if you have a local/single seat license. A trial license is always a single seat license.

If you have received a trial license code, please activate the option “Use a trial license” and enter the code you have received. The code consists of either 6 or 12 alphanumeric characters (letters or digits). Please take into account that the letters are case sensitive.



A red cross appears right to the code as long as the code is not proper. When the red cross changes to a green checkmark, the code is proper and you can continue.



The trial license code activates a 30 days time period, beginning from the first start of the NCspeed application.

Note: You can check the status of the trial license by starting a web browser and navigate to the Admin Control Center <http://localhost:1947> after the installation process.

Network license

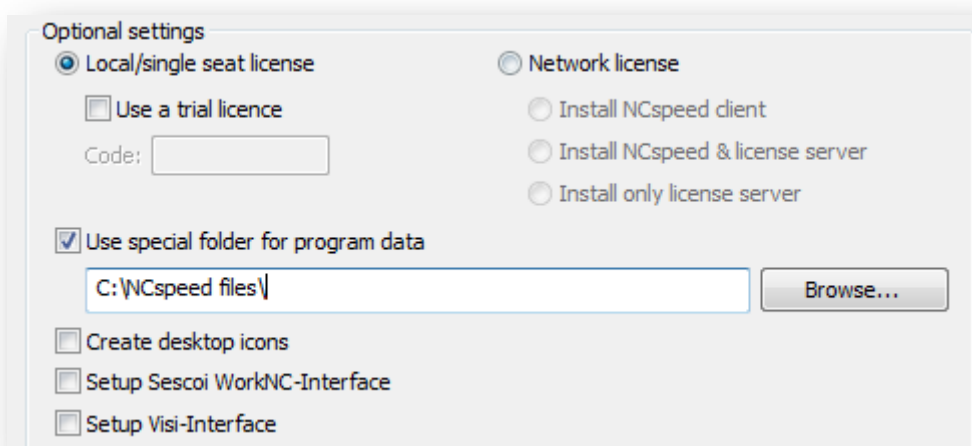
Select this option if you have purchased a network license and select one of the following options

- **Install NCspeed client:** Select this option if you want to install the NCspeed application on the actual computer, but the licensing is handled by a different computer (the license server).
- **Install NCspeed & license server:** Select this option if you want to install the NCspeed application on the actual computer and the licensing is handled by this computer, too.
- **Install only license server:** If you are running a dedicated license server, please use this option on the server. It installs the necessary drivers for the license handling, but not the NCspeed application itself.


If you install a license server, you will be asked for the dongle type and additional information at the end of the installation process, see chapter

Program data folder

The NCspeed application stores internal data like machine configurations and kinematics in a folder. This folder is by default set to “C:\ProgramData\NCspeed files”. It is possible to change this folder by activating the option “Use special folder for program data”. Then, you can enter the location of the desired folder.



Note: The users need read and write permission to that folder.


 Note: You can change the location of that folder later by using the **NCspeed maintenance utility** (NCSMaint.exe). For further details please read the corresponding documentation.

Create desktop icons

If this option is activated, an icon for NCspeed and the NCspeed batch server is created during the setup process.

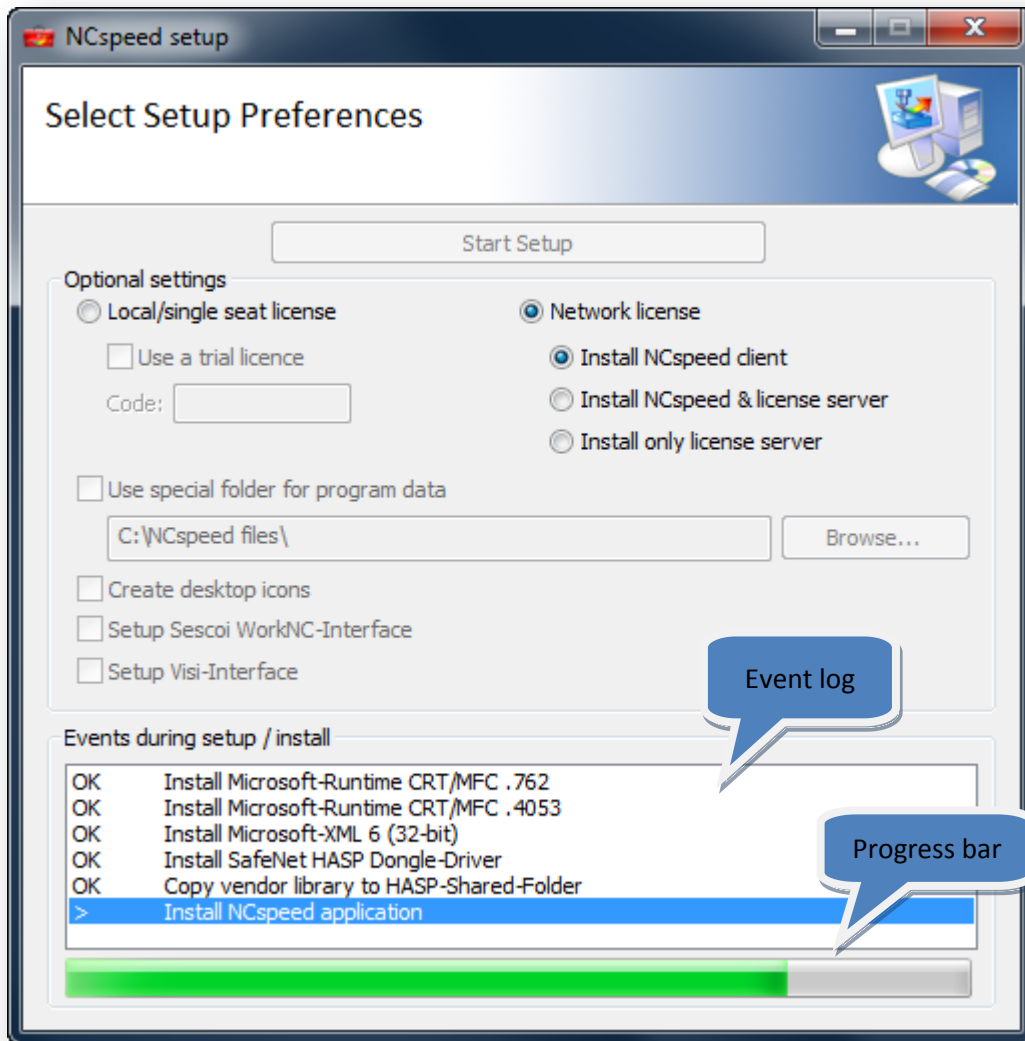
Setup CAM interface

NCspeed has a direct interface to SESCOI's CAM-system WorkNC and Veros CAM-system Visi. If you want to use NCspeed integrated in one of these CAM-systems, please activate one (or both) of the options.

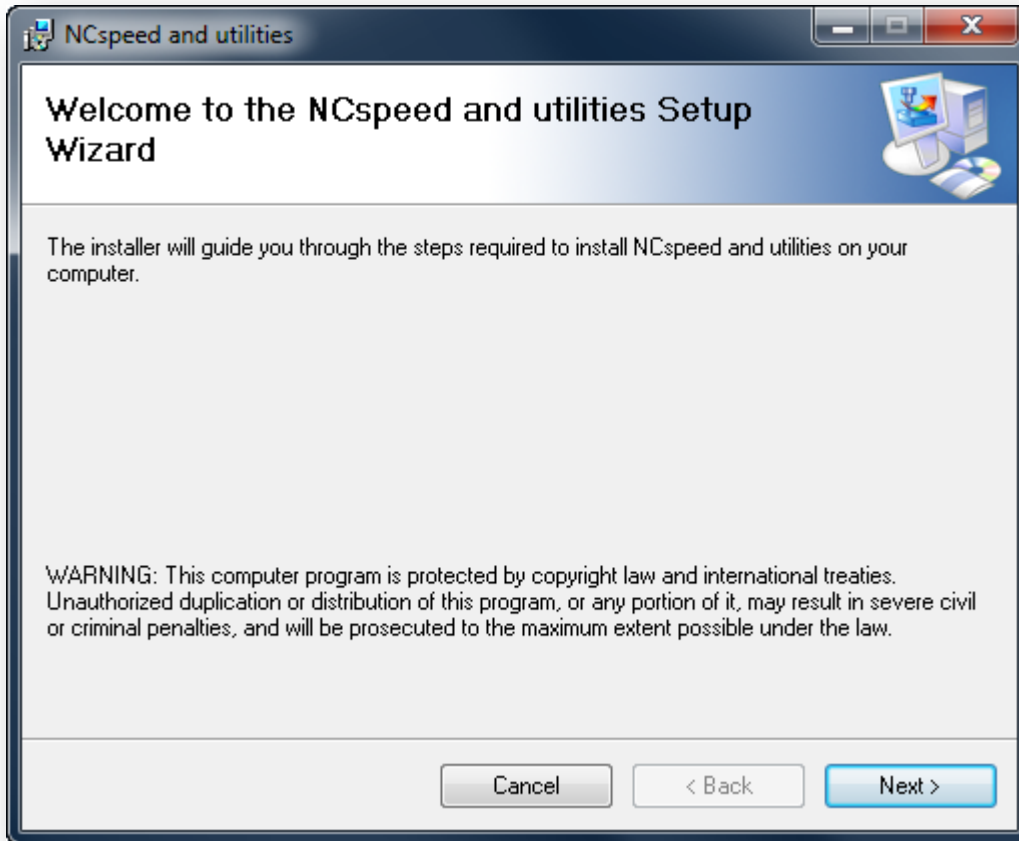
 Note: These options are only visible if one of these CAM-systems is installed on your computer.

During the setup process

After setting the options and clicking on "Start Setup", the installation routine starts.



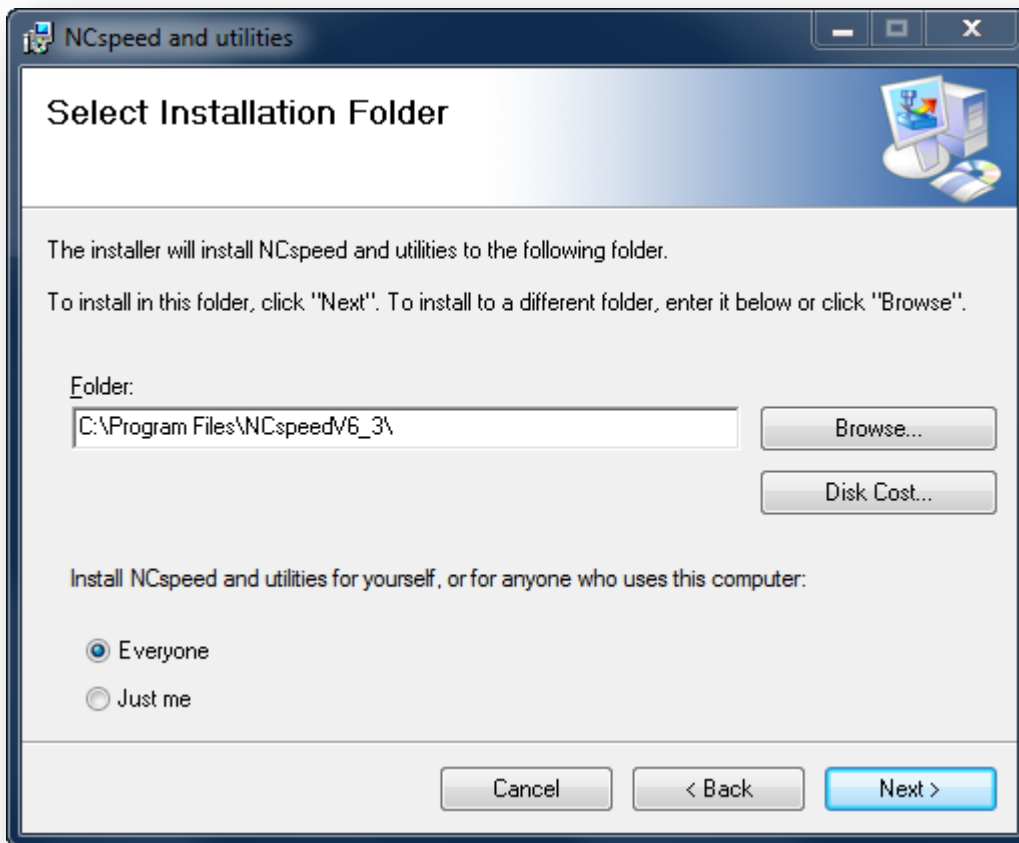
In a first step, the setup program prepares the operating system. After that, the installation of NCspeed itself is started:



Please accept the license agreement and click on "Next".

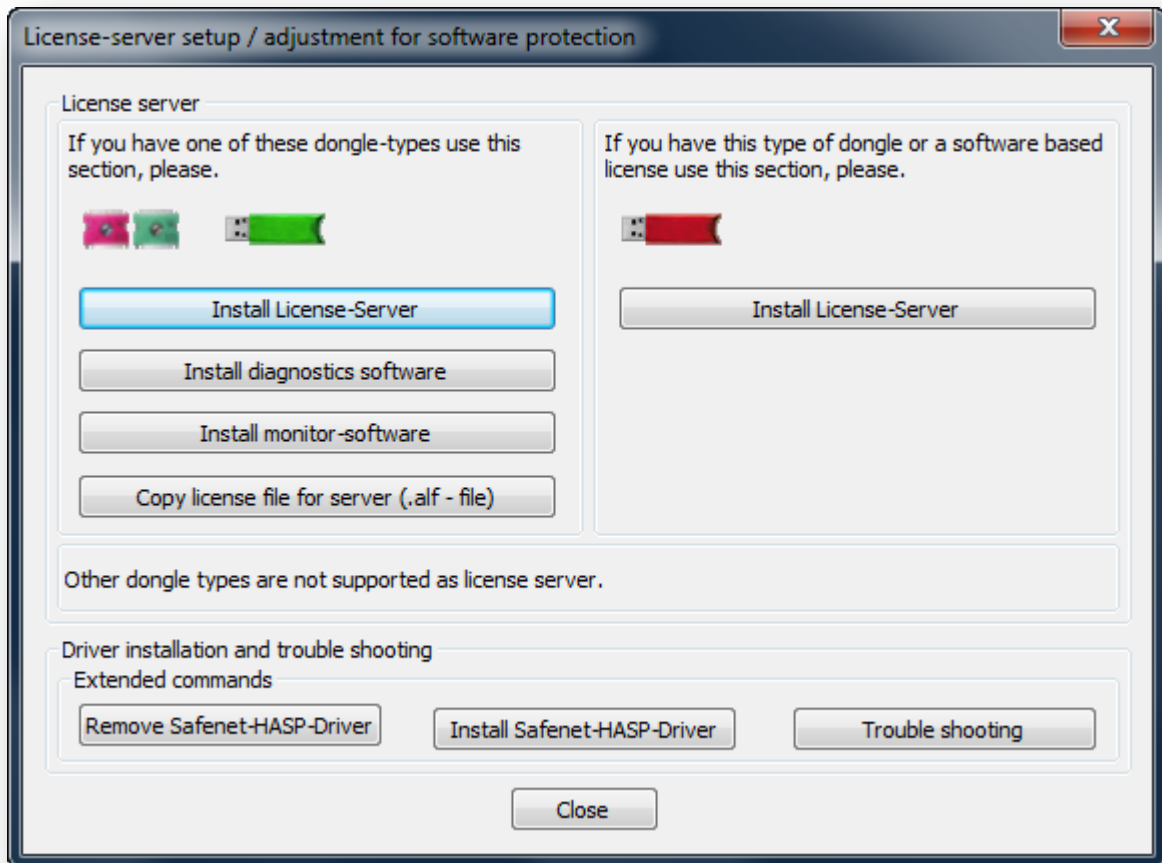


Please choose the installation folder for the NCspeed application and click on “Next”.




License server installation

If the license server installation is activated in the optional parameter at the beginning of the installation, you are asked for the license server type, which depends on the dongle you received with the software package.



Click on the button “Install License-Server” either on the left or on the right side, depending on the color of your dongle.

Hardlock license server installation


If you have one of these dongles, , you have to install the Hardlock license server by clicking on “Install License-Server” on the **left** side. After finishing the installation it is recommended to install the monitor software by clicking on the corresponding button. The monitor software displays the usage of the license and the clients in the network.

IN addition it is necessary to install the license server file (*.alf) by clicking on the button “Copy license file for server”. This file is delivered to you with the dongle and the software package. If you are missing this file it is not possible to access the licenses and it is not possible to run NCspeed. Please contact your local distributor or send an e-mail to support@ncspeed.de if you need a copy of that file.



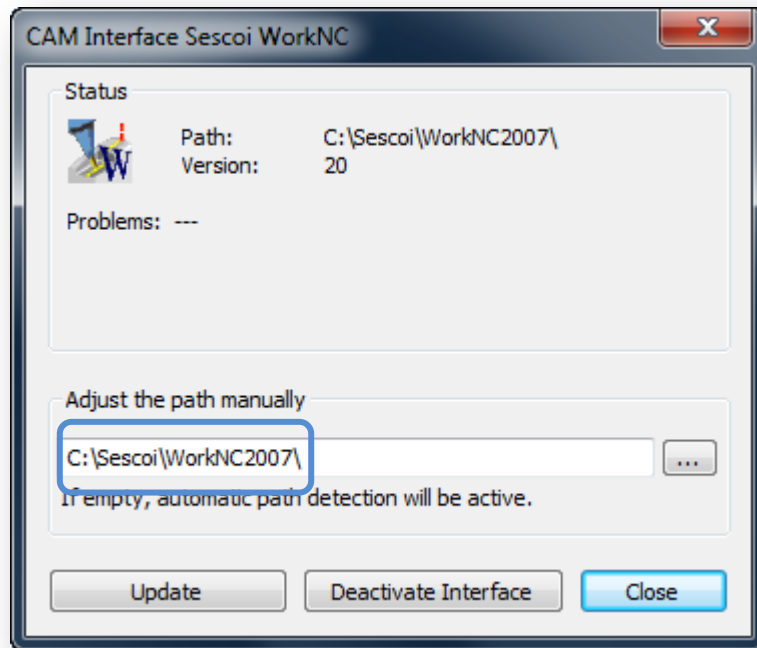
Note: It is not necessary to install the monitor software on the license server. For tracking the usage of the licenses, you can install the monitor software on any computer in your network.

HASP-HL license server installation

If you have one of these dongles, , you have to install the HASP-HL license server by clicking on “Install License-Server” on the **right** side. For tracking the license usage you can use a web browser and navigate to <http://localhost:1947>.

Setup WorkNC interface

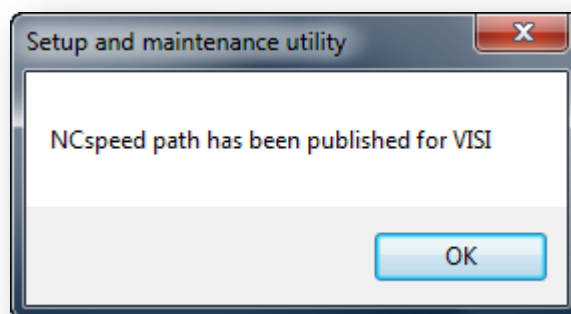
When the option “Setup SESCOI WorkNC-Interface” is activated, the setup procedure is searching for the installed WorkNC version and folder.



Please check the found path. If necessary change the path to the desired location. Click on "Update" to install the interface between NCspeed and WorkNC, and then click on "Close".

Setup Visi interface

When the option "Setup Visi-Interface" is activated, the setup procedure publishes the installed NCspeed-version to the operating system, so that Visi can access the NCspeed application.



Please confirm the publishing process by clicking on "OK".